

# JUNGLE KING

# NPS 4x4

GVW 5,000kg  
4x4 RIGID

ALL-NEW ISUZU NPS

# THE KING OF 4x4

**125PS**  
Max Power

**325Nm**  
Max Torque

One Piece  
**Straight**  
Chassis



FROST & SULLIVAN

2013 BEST PRACTICES AWARD

Malaysia Excellence Awards  
Commercial Vehicle Company of the Year

# ISUZU N-SERIES

*Tested and Trusted*

## Introduction

### All New Isuzu NPS

With superb off-road ability, outstanding power and durability, the Isuzu NPS is built to deliver cost-effective operations for your business. After numerous active monitoring tests, Isuzu NPS is proven to be an unbeatable combination of versatility and reliability in Malaysia.



**NPS**  
**4x4** **JUNGLE KING**

## Performance

**EURO 2**



**125PS**  
Max Power

**325Nm**  
Max Torque

### MOST POWERFUL IN ITS CLASS\*

Advanced 4HG1-T engine offers top class output and torque as well as better pulling performance, ensuring Isuzu NPS meets the needs of every user.

\*Most Powerful 5 Ton GVW truck in 4x4 category



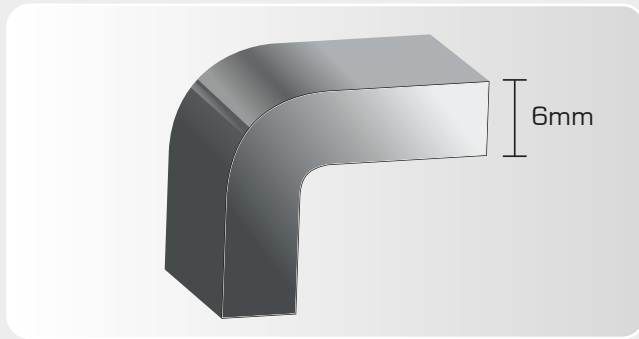
### High Traction Performance

Performs better with traction force in various terrains especially off-road conditions. This ensures greater reliability for severe operations.

## Durability

### Tough and Dependable

The Isuzu N-Series is built rock-solid from the ground up. Its rigid frame easily handles rough conditions. The frame chassis is constructed strong enough to facilitate the mounting of a wide variety of bodies.



#### 6mm Frame Chassis Thickness

High-bending strength and tough chassis for maximum loading capacity.



#### Bigger Rear Axle Capacity (Up to 6.6 ton)

Greater axle load is durable for maximum loading and makes the vehicle ready for tougher conditions.



#### One Piece Straight Chassis

Even load distribution ensures better stability for heavy usage and effortless body mounting.

## Off-road Ability

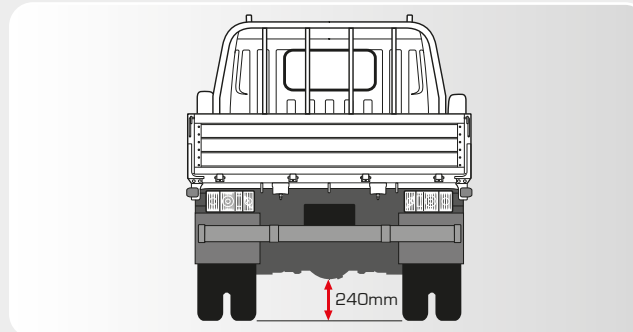
### Conquer Any Terrain

The Isuzu NPS with higher ground clearance and approach angle is designed to meet the challenge of any job in any given terrain. Its great suspension system with a stabiliser bar ensures better stability on the road, especially at sharp turns.



#### Greater Suspension System with Stabiliser Bar

Provides better stability for the chassis frame against rolling during sharp turns by connecting the front suspensions.



#### Higher Ground Clearance

Reduced possibility of the vehicle being stuck or the undercarriage being damaged by rough surfaces.



#### Front Free Wheel Hubs

Enhances reliability while engaged in 4x4 mode and ensures optimisation in 4x2 mode. Its 4x2 mode reduces drivetrain wear and tear, as well as fuel consumption.

## Exterior

### Solid and Sculptured

In pursuit of a design with lasting appeal, Isuzu made effective use of lines between cab parts and included no superfluous decoration. Its exterior cab's high rigidity, aerodynamically efficient design and user-friendliness ensure the functionality of a light duty truck is not compromised.



#### Aerodynamic Perfection

The aerodynamic front corners and roof cut air resistance, especially when rear cargo bodies are mounted, contributing to better fuel economy and quietness.



#### Excellent Ingress/Egress

90 degree wide door opening and longer handle grip provide effortless cab access along with a larger step area and wider cabin floor.



#### Vertical Outside Handles

Vertical handles make it easier to access tall vehicles. In addition, grips are designed to accommodate thick gloves.

## Interior

### The Ultimate Workspace

Specifically designed with excellent accessibility, the cabin is a workspace designed for maximum utility, safety and comfort. The spacious cabin makes driving more comfortable by ergonomically locating interior panels to provide ample room. The redesigned seat reduces driver fatigue and makes getting in and out easier.



#### Spacious Interior

With an expanded head clearance, vertical front pillar and larger space behind the seats, the cab can easily fit three adults comfortably.



#### Optimised Driving Position

Reclinable seat together with adjustable tilt, telescopic steering and hip-point (which can be adjusted forward and upward) provide a more natural driving position with a good field of view.



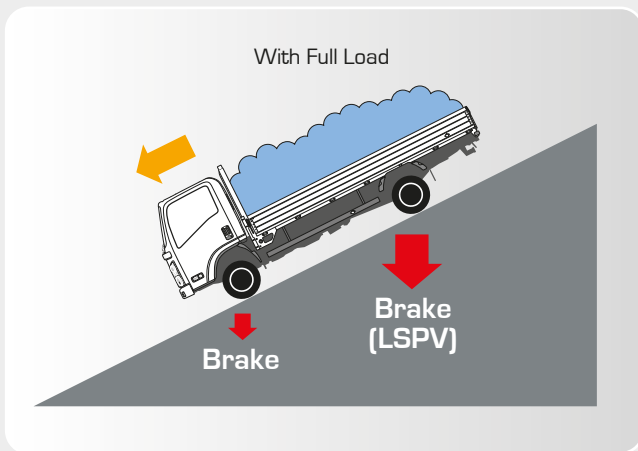
#### Ergonomic Instrument Panel Design

The switches are ergonomically designed and positioned for improved visibility within the driver's field of view. Up to 6 DIN can be installed for LCD and GPS devices.

# Safety

## Safe and Secure, Always

The highly rigid cab and reinforced frame minimise impact forces in the event of collision, protecting drivers by creating a survival space. The addition of a Load Sensing Proportioning Valve (LSPV) further improves its stability in every road condition, with or without loading the vehicle.



### Load Sensing Proportioning Valve (LSPV)

Senses the load of vehicle and distributes an effective brake force according to the axle load to avoid skidding during sudden braking.



### Multi-Reflector Halogen Headlamps

Clear resin lenses and headlamp reflectors provide outstanding illumination over a broad area to improve night time visibility and safety.



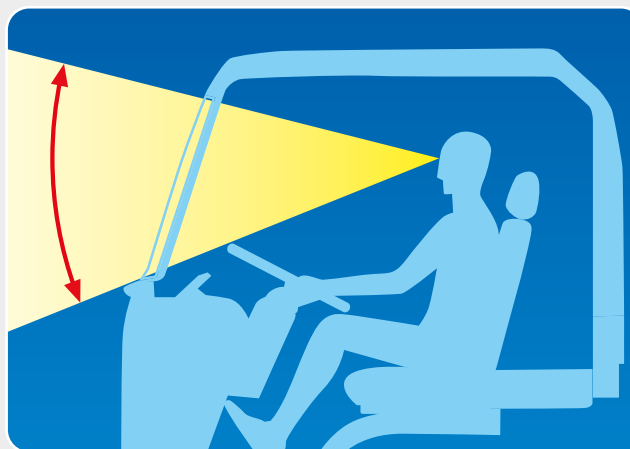
### Door-side Turning Lamps

Improves side visibility and alerts other road users.



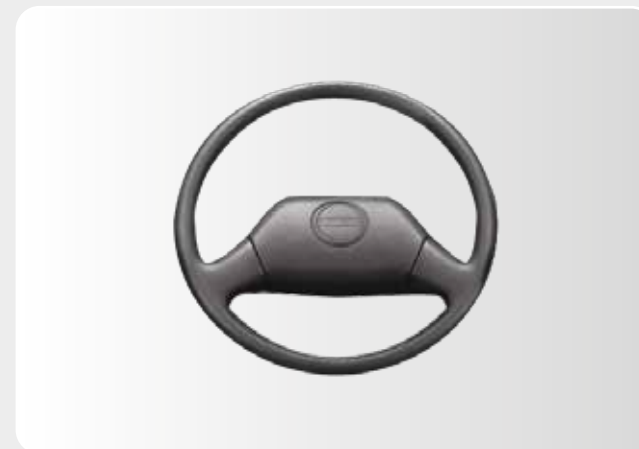
### Door Impact Beam with High Tensile Reinforcement Frame

Underframe and door impact beam with added structural strength effectively restrain as well as protect driver and passengers in the event of a side collision.



### Wider Windscreen

Offers extra visibility of the surrounding road conditions.



### Energy Absorbing Steering Wheel and Collapsible Steering Column

Absorbs impact and minimises injury in the event of collision for better driver protection.

# SPECIFICATION SHEET

## MODEL CODE

## ISUZU NPS71UHH (4x4)

ENGINE		
Model		4HG1 - T
Type		4-Cylinder In-line, 4-Cycle, Water-cooled, OHC, Turbo
Displacement	cc	4,570
Bore x Stroke	mm	115 x 110
Compression Ratio		19.0:1
Maximum Output	kW (PS) @ rpm	92(125) @ 2,850
Maximum Torque	Nm (kgm) @ rpm	325(33) @ 1,800
Emission Level		Euro 2
Fuel System		Direct Injection
WEIGHT & CAPACITIES		
Gross Vehicle Weight	kg	5,000
Curb Weight	kg	2,735
Front	kg	1,765
Rear	kg	970
Fuel Tank Capacity	l	100
AXLE		
Front	Type	Single Banjo Full Floating with Manual Lock Hub
Front Axle Capacity	kg	2,660
Rear	Type	Single Banjo Full Floating
Rear Axle Capacity	kg	5,060
CLUTCH		
Type		Dry Single Plate with Diaphragm Spring
Size	mm	300
PERFORMANCE		
Max. Speed	km/h	115
Max. Gradeability	%	66
SUSPENSION SYSTEM		
Type	Front	Semi Elliptical Alloy Steel Leaf Spring with Double Acting Telescopic Shock Absorber, Stabiliser Bar
	Rear	Semi Elliptical Alloy Steel Leaf Spring with Double Acting Telescopic Shock Absorber
TYRES & WHEELS		
Tyres		7.50R16-10PR
Wheels		6.00GS-127
BRAKES		
Service		Drum Brakes with Dual Circuit Hydraulic Control, Vacuum Assistance and Load Sensing Proportioning Valve (LSPV)
Parking Brake Type		Transmission Mounted, Mechanical Operated Internal Expanding
Auxiliary		Exhaust Brake
STEERING		
Steering System		Power Assist, Recirculating Ball Type
Min. Turning Radius	m	6.2
ELECTRICAL		
Battery		24V
Alternator		24V-50A
CAB		
Size		Wide
Design		Tilt

Isuzu Malaysia Sdn. Bhd. is engaged in an ongoing research and development programme, and reserves the right to change specifications, resulting in advancements or technical refinements, without prior notice. All product specifications are within normal manufacturing allowances and tolerances.

# ISUZU

**ISUZU MALAYSIA SDN BHD** (664946-H)

501D, LEVEL 5, TOWER D, UPTOWN 5, NO 5, JALAN SS21/39,  
DAMANSARA UPTOWN, 47400 PETALING JAYA, SELANGOR DARUL EHSAN.

GENERAL LINE: 03-7723 9777 FAX: 03-7723 9779 HOTLINE: 1-300-88-1133  
www.isuzu.net.my

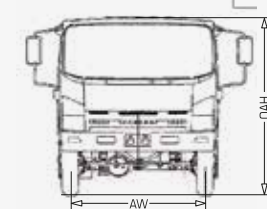
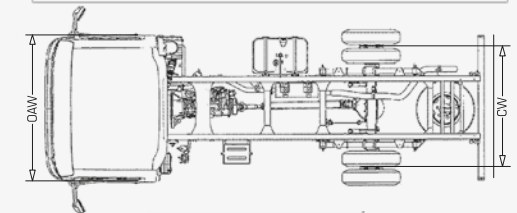
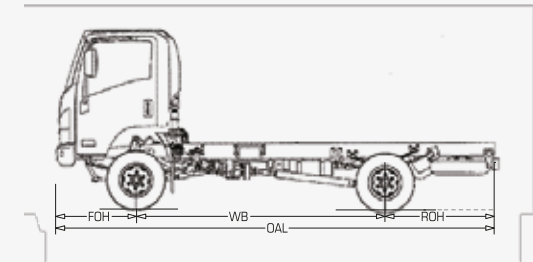


1-800-88-8000

TRANSMISSION	1st	2nd	Gear Ratio				Reverse	Final	Transfer Gearbox	
			3rd	4th	5th	High			Low	
<b>NPS71UHH</b> 5-Speed Manual (MY5T)	5.315	3.053	1.655	1.000	0.721	5.068	6.142	1.00:1	1.842:1	

### DIMENSIONS

Overall Length	OAL	mm	5,985
Overall Width	OAW	mm	2,115
Overall Height	OAH	mm	2,455
Wheelbase	WB	mm	3,395
Front Overhang	FOH	mm	1,110
Rear Overhang	ROH	mm	1,510
Front Tread	AW	mm	1,675
Rear Tread	CW	mm	1,650



Dealer's information