

FROST & SULLIVAN

2013 BEST PRACTICES AWARD

Malaysia Excellence Awards
Commercial Vehicle Company of the Year

**FVR
285**

GVW 18,000kg
4x2 RIGID



THE NEW ISUZU FVR 285 MOST POWERFUL

285PS

Max Power

883Nm

Max Torque

10mm

Thickness
Ladder Type Chassis

**ISUZU
F-SERIES**

Ready and Reliable

Introduction

The New Generation of Hauling Power

Isuzu F-Series FVR meets the challenges of tough jobs and cost-effective operations. Its unbeatable combination of versatility and reliability makes Isuzu F-Series the world leader in medium-duty trucks.

**FVR
240**
HEAVY DUTY COMMONRAIL



**FVR
285**
HEAVY DUTY COMMONRAIL



Performance



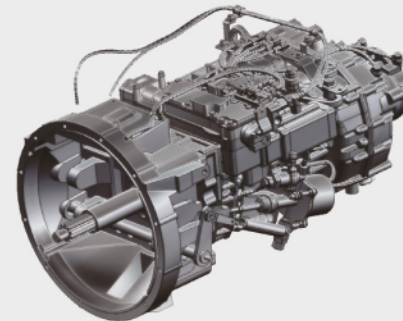
EURO 2

285PS
Max Power

883Nm
Max Torque

MOST POWERFUL IN ITS CLASS*

Advanced 6HK1-TCS** engine offers top class output and torque as well as great fuel efficiency, ensuring Isuzu F-Series FVR meets the needs of every sector.



ZF 9 Speed Transmission with Overdrive Gear Ratio**

The new 9-speed transmission with overdrive gear ratio is superior in terms of torque capacity, durability and fuel efficiency.

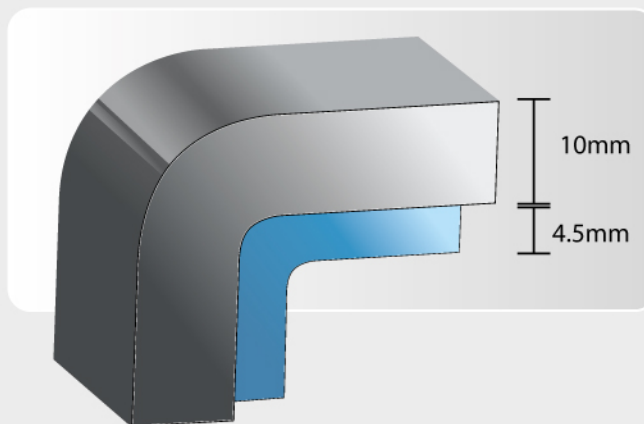
* Most powerful truck in 18 ton GVW category. ** Available for FVR 34 UU-ST

Durability

Tough and Dependable

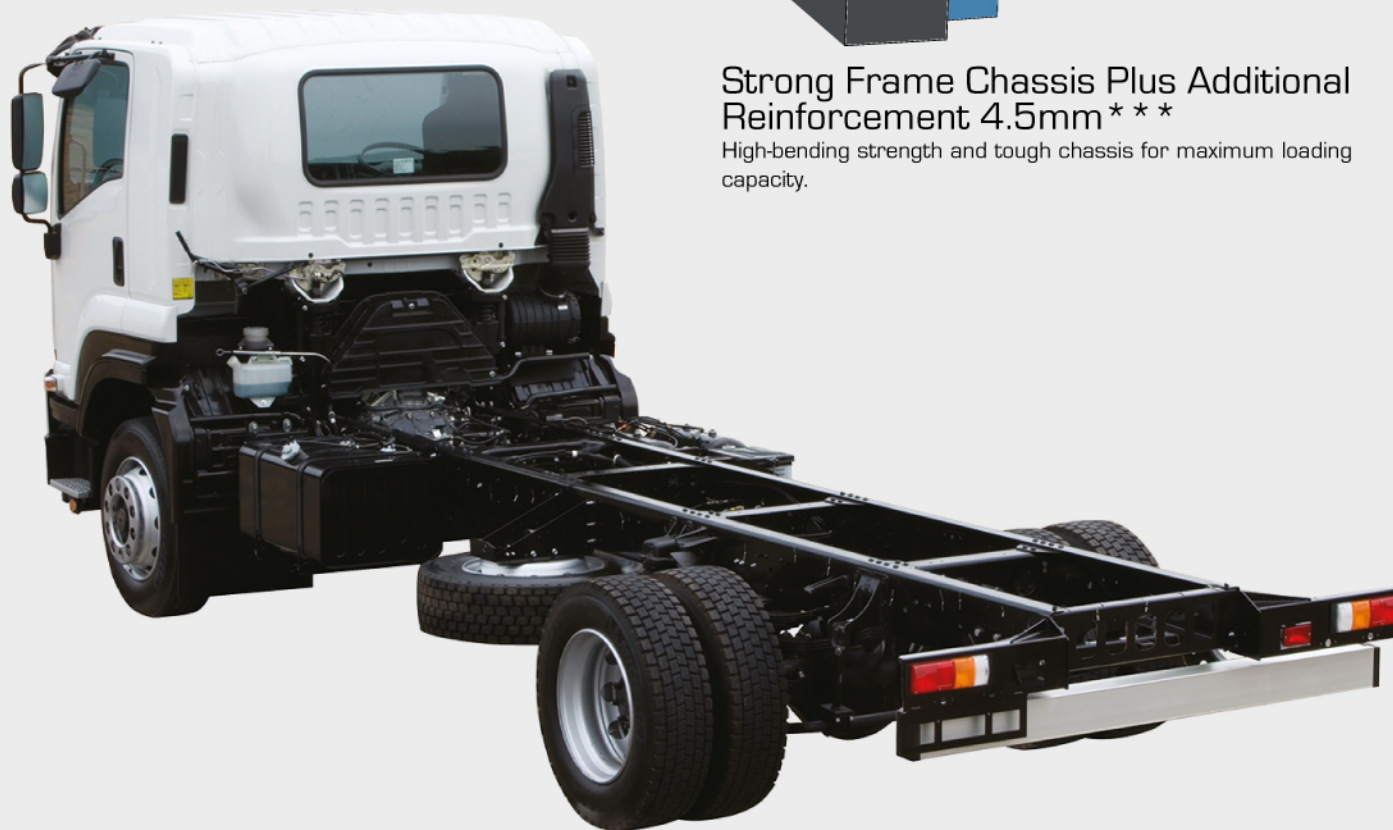
The Isuzu F-Series is built rock-solid from the ground up. Its rigid frame easily handles rough conditions. The frame chassis is strong while other enhancements include the use of high-tensile steel and closed-section cab construction to increase strength while reducing overall weight.

10mm
Thickness
Ladder Type Chassis



Strong Frame Chassis Plus Additional Reinforcement 4.5mm * * *

High-bending strength and tough chassis for maximum loading capacity.



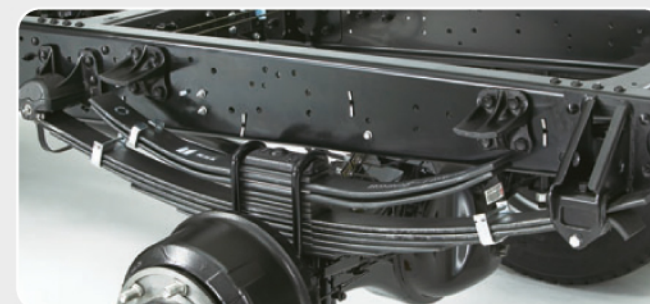
Bigger Rear Axle Capacity (13 ton)

Greater axle load helps to raise the loading capacity and makes the vehicle ready for tougher conditions.



Thicker Wheel Disc (13mm)

Prevents rim cracking problem and enables carriage of maximum loads.



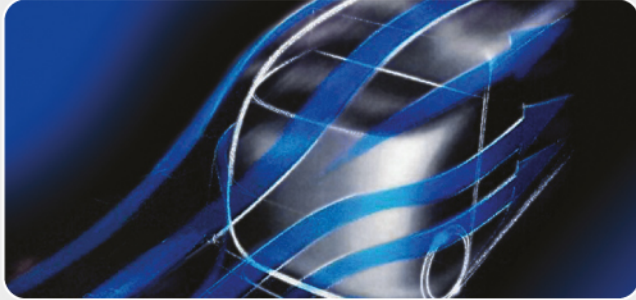
Wider Rear Leaf Spring (100mm)

Durable when carrying the maximum load.

Exterior

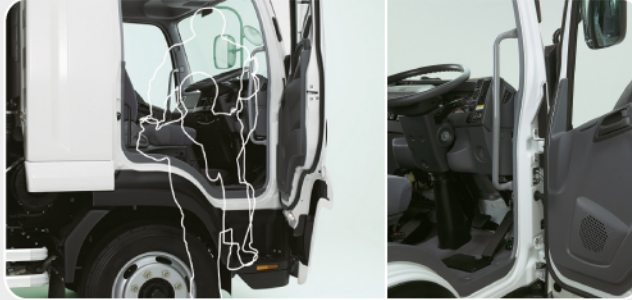
Solid and Sculptured

Its high rigidity exterior cab coupled with an aerodynamically efficient design and user-friendliness ensure performance without compromise.



Aerodynamic Perfection

The aerodynamic front corners and roof cut air resistance, especially when rear cargo bodies are mounted, contributing to better fuel economy and quietness.



Excellent Ingress / Egress

90-degree wide door opening and longer handle grip provide effortless cab access along with a larger step area and wider cabin floor.



Vertical Outside Handles

Vertical handles make it easier to access tall vehicles. In addition, grips are designed to accommodate thick gloves.

Interior

Evolved Professional Gear

Specifically designed to ease driver fatigue and improve productivity, the cab features ergonomic seating with a wide variety of storage solutions. An air-suspension driver seat, spacious bunk and wide bed mattress are available for ultimate comfort.



Wider Cab Space with Bed Mattress

Extra space for comfort and convenience on the road.



Multi-purpose Storage

Practical storage layout for easier stowage and retrieval.



Ergonomic Instrument Panel Design

Ergonomically designed and positioned for improved visibility within the driver's field of view.

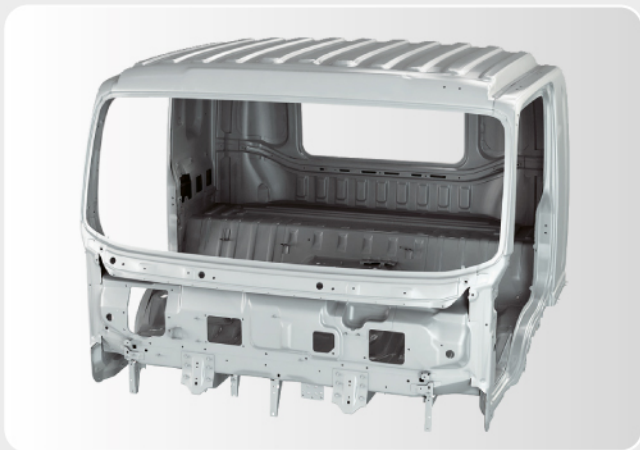


Air Suspension Driver Seat

Less driver fatigue for long haul journeys.

Safe and Secure, Always

Driver safety is a top priority in the Isuzu F-Series. Isuzu F-Series has proven itself to professional drivers around the world as the ideal partner for long hours behind the wheel.



High Rigidity Cab with Cation Electrodepositing Coating

Strengthened underframe with anti-rust protection for reinforced safety.



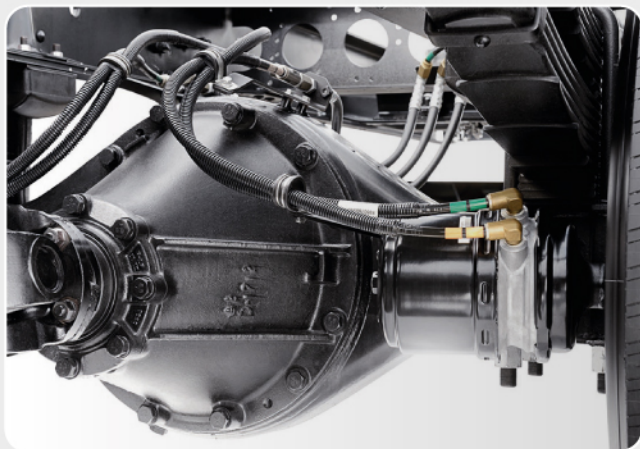
6 Outer Rear View Mirrors**

Reduces blind spots and increases visibility. ECE regulation compliant.



Door Impact Beam

Built into the door for added structural strength which effectively restrains and protects driver and passengers in the event of a side collision.



Full Air Brake with Auto Adjuster**

Exceptional brake performance in event of emergency braking. The spring brake acting on the rear wheels prevents sliding on slopes when truck is parked.



Double-lock Mechanism for Cab Tilt Adopted

Provides safety and reliability enhancements.



Energy Absorbing Steering Wheel and Collapsible Steering Column

Absorbs impact and minimises injury in the event of collision for better driver protection.

SPECIFICATION SHEET

**FVR
240**

**FVR
285**

MODEL CODE

ISUZU FVR 34 SU-MD (4X2)

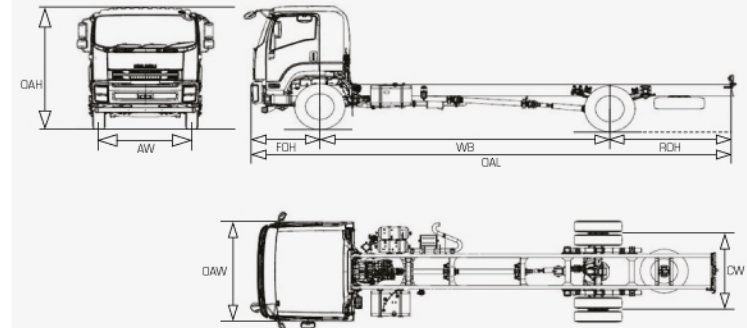
ISUZU FVR 34 SU-SD (4X2)

ISUZU FVR 34 UU-ST (4X2)

ENGINE		6HK1 - TCN		6HK1 - TCS	
Model		6HK1 - TCN		6HK1 - TCS	
Type		6-Cylinder In-line, 4-Cycle, Water-cooled, OHC, Turbo with Intercooler			
Displacement	cc	7,790			
Bore x Stroke	mm	115 x125			
Compression Ratio		17.5:1			
Maximum Output	kW (PS) @ rpm	177 (240) @ 2,400		213 (285) @ 2,400	
Maximum Torque	Nm (kgm) @ rpm	706 (72) @ 1,450		883 (90) @ 1,450	
Emission Level		Euro 2			
Fuel System		Common Rail Direct Injection			
WEIGHT & CAPACITIES					
Gross Vehicle Weight	kg	18,000			
Curb Weight	kg	4,855	5,135	5,600	
Front	kg	3,030	3,170	3,430	
Rear	kg	1,825	1,965	2,170	
Fuel Tank Capacity	l	200			
AXLE					
Front	Type	Reverse Elliot, I-Beam			
Front Axle Capacity	kg	6,300			
Rear	Type	Single Reduction Banjo Design Full Floating			
Rear Axle Capacity	kg	13,000			
CLUTCH					
Type		Dry Single Plate with Diaphragm Spring			
Size	mm	380			
PERFORMANCE					
Max. Speed	km/h	115		110	
Max. Gradeability	%	30.7		58	
SUSPENSION SYSTEM					
Type	Front	Semi Elliptical Alloy Steel Leaf Springs, Hydraulic Double Acting Telescopic Shock Absorber			
	Rear	Semi Elliptical Alloy Steel Leaf Springs			
TYRES & WHEELS					
Tyres		11R22.5-16PR			
Wheels		22.5 x 8.25 (ISO 10 Studs)			
BRAKES					
Service		Air Over Hydraulic (AOH), Dual Circuit, Front & Rear Leading Trailing		Full Air with Auto Adjuster, Dual Circuit	
Parking Brake Type		Mechanical Expansion Type, Located at the Rear End of Transmission		Spring Acting, Rear Wheel Parking	
Auxiliary		Exhaust Brake			
STEERING					
Steering System		Power Assist, Recirculating Ball Type			
Min. Turning Radius	m	7.7		9.8	
ELECTRICAL					
Battery		24V			
Alternator		24V-50A			

TRANSMISSION	Gear Ratio										
	C	1st	2nd	3rd	4th	5th	6th	7th	8th	Reverse	Final
FVR 34 SU-MD 6-Speed Manual (MZV-6P)	-	6.615	4.095	2.358	1.531	1.000	0.722	-	-	6.615	6.143
FVR 34 SU-SD 6-Speed Manual (MZV-6P)	-	-	-	-	-	-	-	-	-	-	-
FVR 34 UU-ST 9-Speed Manual (ZF9S)	9.479	6.576	4.678	3.478	2.617	1.890	1.345	1.000	0.752	8.967	6.143

DIMENSIONS		FVR 34 SU-MD	FVR 34 SU-SD	FVR 34 UU-ST
Overall Length	OAL mm	7,955	10,005	
Overall Width	OAW mm	2,400		
Overall Height	OAH mm	2,835		
Wheelbase	WB mm	4,650	6,050	
Front Overhang	FOH mm	1,440		
Rear Overhang	ROH mm	1,865	2,515	
Front Tread	AW mm	1,970		
Rear Tread	CW mm	1,850		



Dealer's information

Isuzu Malaysia Sdn. Bhd. is engaged in an ongoing research and development programme, and reserves the right to change specifications, resulting in advancements or technical refinements, without prior notice. All product specifications are within normal manufacturing allowances and tolerances.

ISUZU

ISUZU MALAYSIA SDN BHD (664946-H)

501D, LEVEL 5, TOWER D, UPTOWN 5, NO 5, JALAN SS21/39, DAMANSARA UPTOWN, 47400 PETALING JAYA, SELANGOR DARUL EHSAN.

GENERAL LINE: 03-7723 9777 FAX: 03-7723 9779 HOTLINE: 1-300-88-1133
www.isuzu.net.my

Exclusive Maintenance Package
FREE Parts* FREE Labour*
Up to 100,000km

*Terms and conditions apply

ISUZU DOCTOR MOBILE
24

1-800-88-8000

WARRANTY
18 MONTHS (OR 80,000 KM)
Whichever comes first

Accessories warranty varies